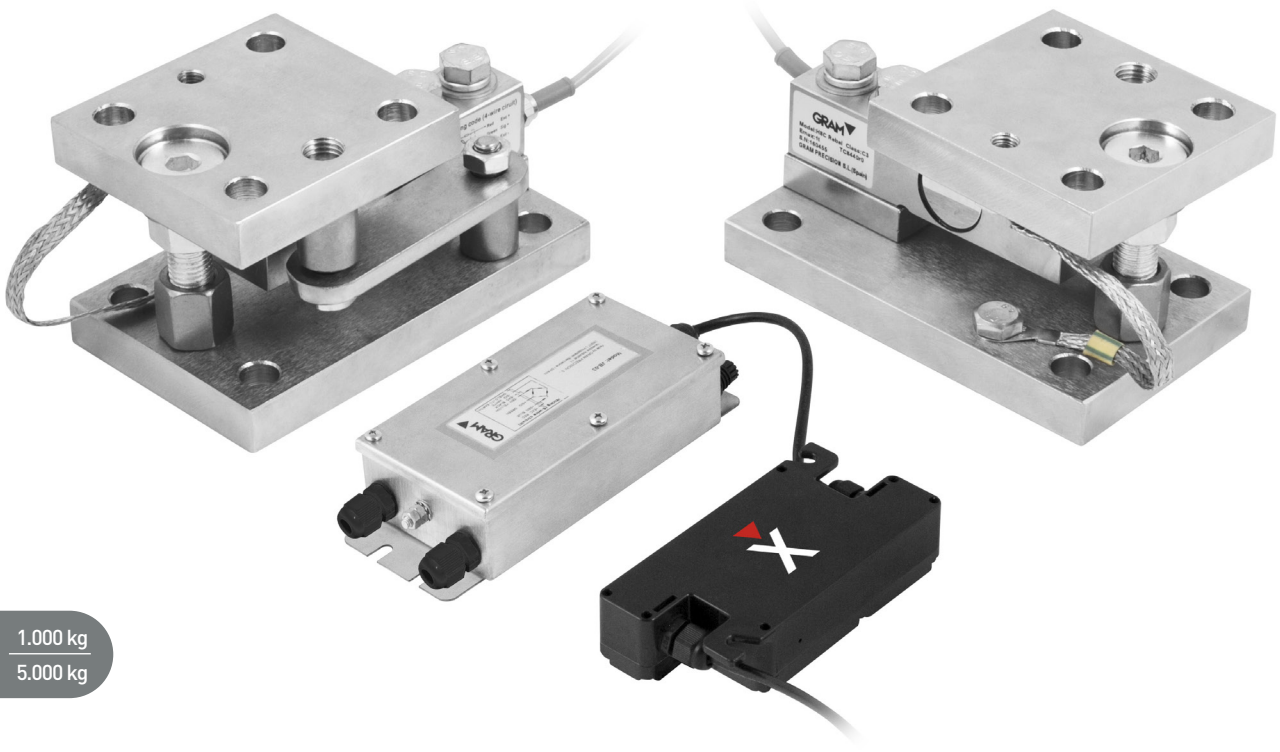


# GRAM **MK Xtrem**



1.000 kg  
5.000 kg

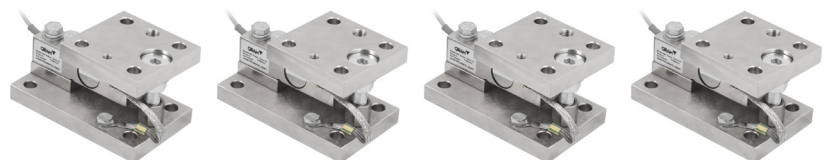


## Complete equipment for weighing up to 20,000 kg

- Composed of 4 MK weighing modules, connection box and digital module for connecting to tanks, hoppers and silos.
- With anti-tip device for greater safety and stabilisers to compensate for vibration.
- With fully digital Xtrem core, the latest in weighing technology.
  - Calready system, connect and weigh without calibrating\*.
  - Versions in nickel-plated steel and AISI 304 stainless steel.
  - Indicators compatible with cable or Wi-Fi.
  - Data can be sent directly to a PC; the indicator is not essential.
  - Maximum safety: important adjustment and calibration data incorporated in the digital Xtrem module.
  - Connects to Wi-Fi network\*\* and sends the data to any equipment connected to the IP network.
  - Total flexibility: Sends the data via cable and Wi-Fi simultaneously.

(\* ) For accurate adjustment it must be calibrated once installed.

(\*\*) Optional.



Device consists of 4 MK weighing modules.

Hold

→T←

Time

Item

09:07:46

7638900295641

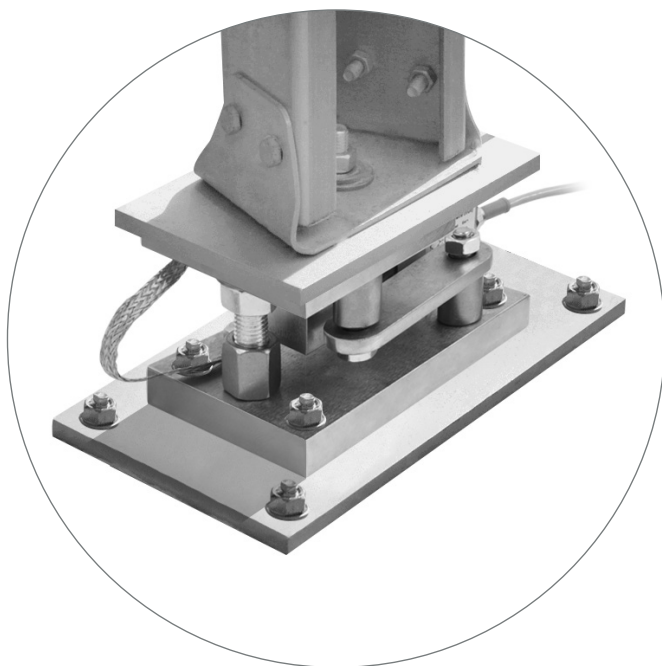
12:10:26

7638900295641



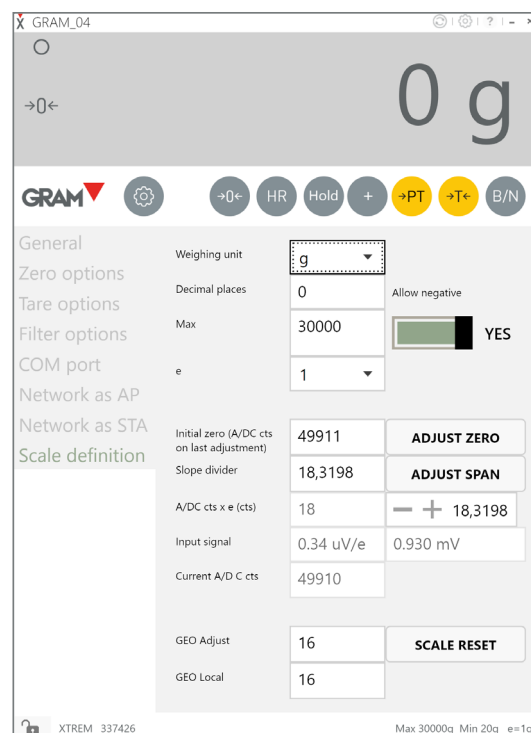
### Robust structure

The MK weighing modules with their highly robust structure are very suitable for weighing large quantities for silos, hoppers and tanks.



**Maximum safety**

Our MK modules incorporate an anti-tip system and sensor change without dismantling the support, for quick and convenient maintenance.



**Calibration without weights**

Our MK modules are electronically calibrated and can continue to be calibrated without the need for weights, although for greater accuracy, a conventional adjustment can also be performed.

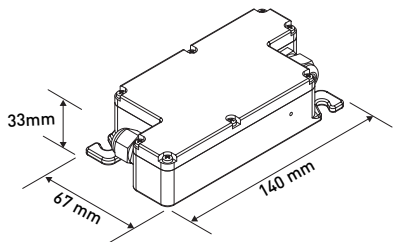


**Secure data**

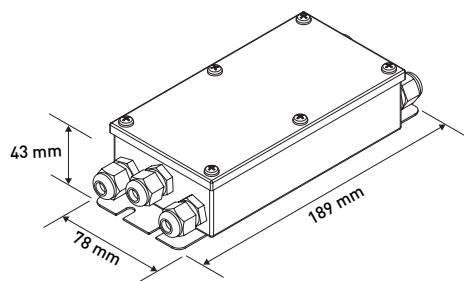
The Xtrem module stores all scale adjustment data, and sends them directly to a PC, Smartphone (2) or any of our compatible indicators.

Dimensiones exteriores (mm)

Xtrem module



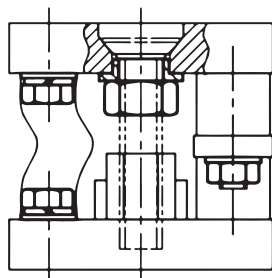
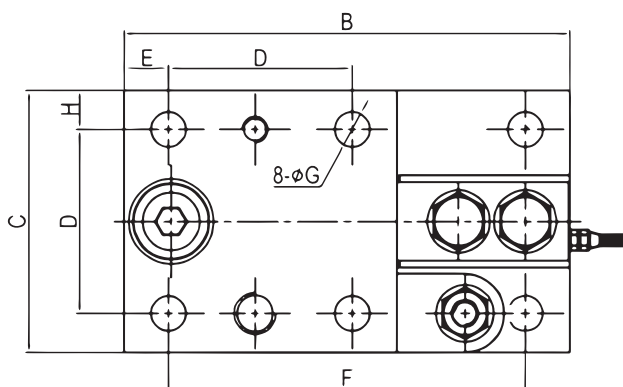
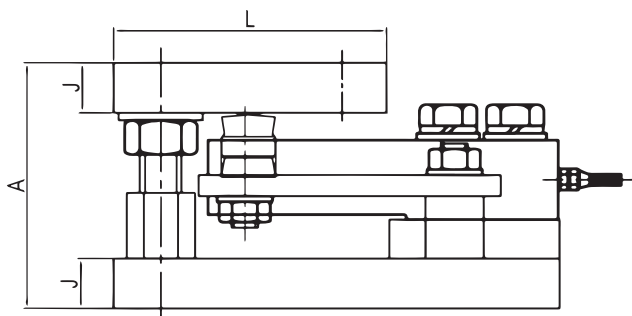
Junction box



Model	MK Xtrem 1T	MK Xtrem 2.5T	MK Xtrem 5T	MK Xtrem 1T S	MK Xtrem 2.5T S	MK Xtrem 5T S
Reference	70553	70554	70555	70556	70557	70558
Capacity	4 x 1000 kg	4 x 2500 kg	4 x 5000 kg	4 x 1000 kg	4 x 2500 kg	4 x 5000 kg
External resolution	=> 200 g	=> 500 g	=> 1000 g	=> 200 g	=> 500 g	=> 1000 g
Internal resolution	500,000 divisions					
Speed of weight acquisition	12 samples per second					
Linearity error	< 0,0001%					
Weighing units	g, kg, lb, oz					
Extended resolution mode	x10					
Counting mode	Including					
Digital Filter	5 options, user configurable					
Filter for animal weighing	Including					
Multi range	Up to 2 ranges					
Multi step	Up to 2 steps					
Connectivity	RS 232-C, WiFi (optional)					
Transmission speed	9600, 19200, 38400, 57600, 115200 bauds					
Power	230V/50 Hz mains (Euro) 7.5V DC or via indicator					
Working temperature	-10°C / +40°C					
Support material	Nickel plated steel			AISI 304 stainless steel		
Load sensing material	Nickel plated steel			Stainless steel		
Junction box	Stainless steel with IP67 protection					
Sensors without feet dim. (mm)	170 x 120 x 93,6	220x120x125,3	170 x 120 x 93,6	220x120x125,3	170 x 120 x 93,6	220x120x125,3
Xtrem digital module dim. (mm)	140 x 67 x 33					
Junction box dim. (mm)	189 x 78 x 43					
Total weight (kg)	23,6	44,5	22,5	42,8	22,5	42,8
Packing dimension (mm)	550 x 340 x 180	650x370x210	550 x 340 x 180	650x370x210	550 x 340 x 180	650x370x210
Total weight with packaging (kg)	25,3	46,1	24,2	44,9	24,2	44,9

Dimensiones exteriores (mm)

Cells (x4)



Model	A	B	C	D	E	F	G	H	J	K	L
MK Xtrem 1T	93.6	170	100	70	17	136	13.5	15	19	17	104
MK Xtrem 2.5T	93.6	170	100	70	17	136	13.5	15	19	17	104
MK Xtrem 5T	125.3	220	120	84	25.5	175	14	18	23	19.5	135



## ► K3 INDICATOR

Compatible **XTREM**

Ref.	Model	Connection
6170	K3-W	WiFi

Ref.	Model	Connection
6170	K3-X	Cable



## ► K3i INDICATOR

Compatible **XTREM**

Ref.	Model	Connection
6171	K3i-W	WiFi

Ref.	Model	Connection
6171	K3i-X	Cable



## ► K3i Printer INDICATOR (\*)

(\*) Indicator not compatible with Xtrem digital equipment  
Only compatible with analogue equipment.

Ref.	Model	Resolution
60960	K3i Printer	100,000 divisions



## ► SC2 INDICATOR (\*)

(\*) Indicator not compatible with Xtrem digital equipment  
Only compatible with analogue equipment.

Ref.	Model	Resolution
5305	SC2 (*)	30,000 divisions



## ► K4i INDICATOR (\*)

(\*) Indicator not compatible with Xtrem digital equipment  
Only compatible with analogue equipment.

Ref.	Model	Resolution
60136	K4i (*)	30,000 / 60,000 div.



## ► K2 INDICATOR (\*)

(\*) Indicator not compatible with Xtrem digital equipment  
Only compatible with analogue equipment.

Ref.	Model	Resolution
60018	K2 (*)	60,000 divisions



## ► K2E INDICATOR (\*)

(\*) Indicator not compatible with Xtrem digital equipment  
Only compatible with analogue equipment.

Ref.	Model	Resolution
60020	K2E (*)	60,000 divisions



## ► K2N INDICATOR (\*)

(\*) Indicator not compatible with Xtrem digital equipment  
Only compatible with analogue equipment.

Ref.	Model	Resolution
60019	K2N (*)	60,000 divisions



## ► K2P INDICATOR (\*)

(\*) Indicator not compatible with Xtrem digital equipment  
Only compatible with analogue equipment.

Ref.	Model	Resolution
60022	K2P (*)	60,000 divisions



## ► VERIFICATION

Ref.	Certifications
8031	CE verification certificate from 601 kg to 1500 kg (*) <b>M</b>
8032	CE verification certificate from 1501 kg to 3000 kg (*) <b>M</b>

Ref.	Certifications
8029	ISOCAL certificate from 601 kg to 1500 kg
8030	ISOCAL certificate from 1501 kg to 3000 kg

**M** (\*) For verified units, "M" indicator and Verification certificate have to be included.

▶ INDICATOR OPTIONS

Ref.	Model
33799	WiFi Board
32330	3-relay output (K3, K3i)
60033	RS-232 (K2, SC2)
33772	RTC Board (K3, K3i)

▶ COLUMN BRACKETS / BASES

Ref.	Model
33207	ABS swivel base
3803	Stainless steel U tube base
32278	Stainless steel U wall support
31661	Wall support in painted steel with ABS swivel joint



Ref.	Model
3804	Painted steel base with column
3805	Stainless steel base with column
71337	Stainless steel base with K4i column



Indicator not included.

▶ CABLES

Ref.	Model
61084	Direct K USB cable
33205	RS-232 cable to RD3 or PC K, 1.5 m
3738	RS-232 cable to RD3 or PC K, 4 m
32294	RS-232 cable to K Printer
36767	RS-232 cable to PC (K2, SC2)
36766	RS-232 cable to Printer (K2, SC2)
36857	RS-232 cable to PC (K4i)
36858	RS-232 cable to Printer (K4i)

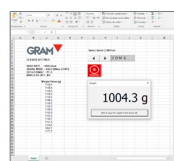


▶ SOFTWARE

Ref.	Model	PVP (€)
----	Xtrem iOS / Android APP	No Charges
----	Xtrem PC Software	No Charges



Ref.	Model	PVP (€)
3792	EX-Link software for PC (**)	No Charges



Ref.	Model
4877	PW-Link software for PC (***)



▶ PERIPHERALS

Ref.	Model
70814	Q2 labelling printer
70034	PR4 printer (RS-232)



Q2 labelling printer.

Ref.	Accessories for labelling printers
36904	Q2 70x58mm label roll



PR4 printer.

Ref.	Model
5263	RD3 repeater indicator (RS-232)



Ref.	Model
60210	LED traffic light with relay board



[\*\*] Compatible with Z3, K3, K3i, S2, S3-RS, S5i-RS.

[\*\*\*] Compatible with Z3, K3, K3i, K3i Printer, MK3, MK3 Printer, S2, S3, S5i, S7i.